

# FUEL NOZZLES



**EQUIPCO®**

INNOVATIONS IN FUEL HANDLING

[www.equipco.com.au](http://www.equipco.com.au)  
**1800 813 182**



**EVERYTHING FOR FUEL, LUBE AND ADBLUE “COMPLETE”**

[www.equipco.com.au](http://www.equipco.com.au)

### AUTOMATIC FUEL DISPENSING NOZZLES

The Equipco range of automatic nozzles offer a broad range of flow rates to meet most applications for auto-shut off refuelling. The nozzles come standard with BSP inlet threads. A range of spare parts are available.

#### 60 SERIES

The Equipco range establishes a new standard for vehicle refuelling. The light weight, single body sand cast aluminium construction produces a smooth working rugged nozzle specifically designed for endurance.

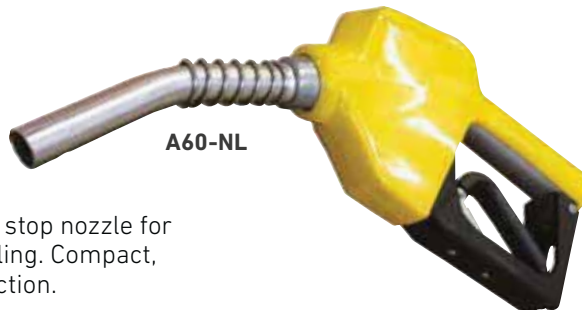
##### A60

- 3/4" BSP Inlet.
- One-hand hold open mechanism for effortless operation.
- Full scuff guard.
- Spout is easily replaced on location.
- Weight 1.1 kg.
- Pump use only.
- 60 LPM max - A60.
- 40 LPM max - A60-NL.
- 25 PSI W.P.

##### A120L

Heavy duty high flow truck stop nozzle for the rigours of diesel refuelling. Compact, strong lightweight construction.

- 1" BSP Inlet.
- Scuff guard.
- Spout is easily replaced on location.
- 200 LPM max.
- Weight 1.55 kg.
- Pump use only.
- 25 PSI W.P.



A60-NL



A120L

Code	Description
A60	3/4" Diesel Nozzle - Black cover. 60 LPM max.
A60-NL	3/4" Unleaded Nozzle - yellow cover. 40 LPM max.
A120L	1" Auto Diesel nozzle - Black cover. 200 LPM max.

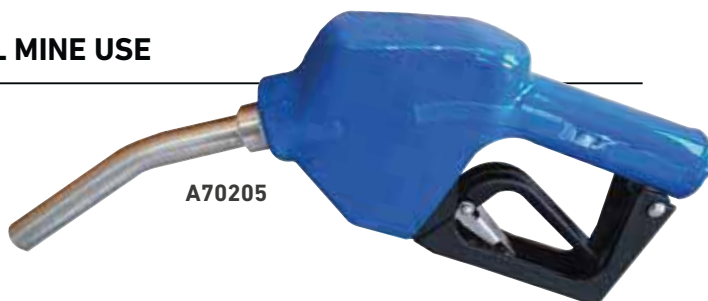
### AUTOMATIC NOZZLE FOR UNDERGROUND COAL MINE USE

#### A70205

Stainless steel automatic nozzle for use with diesel, technical fluids or applications where aluminium is not suitable such as underground coal mine use.

##### Features:

- 3/4" BSP inlet.
- Scuff guard.
- Weight 2.6kg.
- 70 LPM max.
- 25 PSI W.P.
- Suitable for use with Adblue, diesel and some chemicals.
- Pump use only.



A70205

Code	Description
A70205	3/4" Stainless steel auto nozzle. 70 LPM max.



### HUSKY AUTOMATIC SHUTOFF NOZZLES



#### HS45

- Husky automatic shut off nozzle for petrol.
- ¾" BSP female inlet.
- NMI approved for retail use.
- 45 LPM Max flow rate.
- Made in USA.
- Fitted with Flo-Stop™ device shuts off nozzle if it falls from fill neck or when raised above horizontal.
- Dual poppet design for easier opening of nozzle.
- Pump use only



#### HS68

- ¾" BSP husky automatic shut off Service Station Bowser Nozzles
- NMI approved for retail use.
- 68 LPM max flow rate.
- Made in USA.
- Flo-stop™ device that shuts off nozzle in event that nozzle falls or is raised above horizontal
- Pump / Diesel use only



#### HS100

- Husky automatic shut off nozzle for diesel.
- 100 LPM Max flow rate.
- 1" BSP female inlet – 24mm O.D outlet spout.
- NMI approved for retail use.
- Made in USA.
- Fitted with Flo-Stop™ device shuts off nozzle if it falls from fill neck or when raised above horizontal.
- Dual poppet design for easier opening of nozzle.
- Nozzle comes standard with full grip guard and splash guard.
- Aluminium body construction.
- Includes hold open adjustable trigger clip.
- Pump / Diesel use only.



#### HS280

- 1" BSP female inlet.
- NMI approved for diesel retail use.
- High flow diesel truck stop nozzle
- Made in USA.
- Heavy duty for all rigours of retail or commercial fleet users
- 275 LPM max flow
- Flo-Stop™ device
- Pump / Diesel use only



#### HS380

- Automatic high flow refuelling nozzle
- Maximum flow rate: 375 Litres per minute
- Inlet: 1½" F BSP
- Durable die cast aluminium nozzle body.
- Pump / Diesel use only
- Made in USA.

Code	Description
HS45	¾" Husky automatic yellow unleaded nozzle. 45 LPM max.
HS68	¾" Husky automatic shut off Service Station Bowser Nozzles for diesel. 68 LPM max.
HS100	1" Medium flow Husky diesel auto shut off nozzle. 100 LPM max.
HS280	1" Husky automatic shut off Service Station Bowser Nozzle for diesel. 275 LPM max.
HS380	1½" Automatic high volume heavy duty nozzle. 375 LPM max.



### ZVA ELAFLEX SERVICE STATION BOWSER NOZZLE

#### ZVA SLIMLINE

ZVA Slimline unleaded/diesel automatic shut off nozzle with inbuilt check valve.



ZVAUL

- Accurate topping off tank to exact amount.
- Integral swivel joint for ease of use. 1" BSPF.
- Fully serviceable with all parts available.
- Working pressure 7.25 - 58 PSI max.
- Up to 50 LPM max flow unleaded ZVAUL.
- Up to 80 LPM max flow ZVADI.
- Made in Germany.
- Compound main valve and bleed poppet offers minimum pressure loss and maximum flow rate.
- NMI/NSC certified for resale use.
- Pump use only.

#### Options:

- Options on colours of scuff guard for low flow range.
- Splash guard available for low flow range.

Code	Description
ZVAUL	1" Unleaded genuine ZVA Slimline auto shut off nozzle. 50 LPM max flow.
ZVADI	1" Diesel genuine ZVA Slimline auto shut off nozzle. 80 LPM max flow.



ZVADI



#### ZVA25-5

1" Genuine ZVA25 high flow diesel automatic shut off nozzle with inbuilt check valve.

- Fully serviceable.
- Made in Germany.
- 140 LPM max flow rate.
- Diesel use only.
- NMI/NSC certified for resale use.
- Integral swivel joint.
- Pump use only.
- Working pressure 72 PSI max



#### ZVA32

1 1/4" ZVA32 high flow diesel automatic shut off nozzle with inbuilt check valve and swivel with self lubricated ball bearing.

- Fully serviceable.
- Made in Germany.
- 200 LPM max flow rate.
- Diesel use only.
- Pump use only.
- NMI/NSC certified for resale use.
- 32mm inlet.
- Working pressure 7.25 - 87 PSI max.

Code	Description
ZVA25-5	1" Genuine ZVA25 High flow diesel auto shut off nozzle. 140 LPM max.

Code	Description
ZVA32	(32mm) 1 1/4" Genuine ZVA32 high flow diesel auto shut off nozzle. 200 LPM max.

### MANUAL FUEL DISPENSING NOZZLES



#### 10A20

Budget Fuel Trigger Nozzle for diesel or unleaded petrol. Quality product, proven design for gravity fuel storage tanks or farm pump applications.

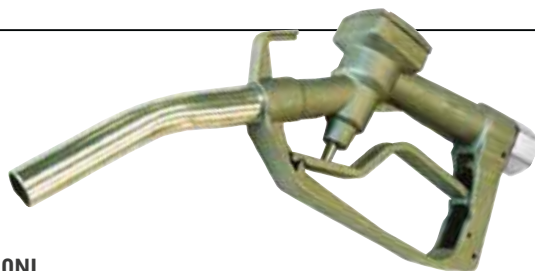
##### Features:

- Screw out diesel or unleaded spout.
- Lightweight aluminium construction.
- Stainless steel stem.
- 'O' ring seals.
- 1" BSP female threaded inlet.
- Steel handle.
- 26 PSI W.P.

#### AVZV25-11

- Aviation manual nozzle bowser style.
- 1" BSP inlet.
- Complete with internal check valve, 100 mesh strainer and integral inlet swivel.
- Also includes dust cap and spring loaded chain, 1.2 Mtr bonding cable and clip.
- 140 LPM max. flow.

Code	Description
AVZV25-11	1" Aviation manual nozzle. 140 LPM max.



#### SF200NL

Equipco manual fuel nozzles are manufactured from cast aluminium with heavy duty design features giving efficient operation. While simple in design, these nozzles are fully serviceable, including interchangeable diesel and unleaded spouts. Premium diesel manual fuel trigger nozzle

##### Features:

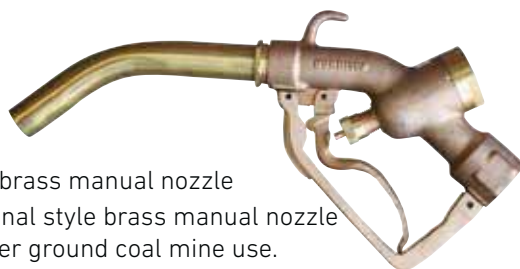
- Screw out curved diesel or unleaded petrol spout.
- Smooth quality alloy construction.
- 1" BSP female swivel hose connection.
- Service cap fixed by 4 screws.
- Hold open spring activated lever latch.
- Efficient flow through design.
- 26 PSI W.P.

Code	Description
10A25	1" Diesel fuel trigger nozzle.
10A20	1" Unleaded petrol trigger nozzle.
SF200NL	1" Premium diesel manual fuel trigger nozzle.
SF200NUL	1" Premium unleaded petrol fuel trigger nozzle, manual operation.
TN1025	1" Water trigger nozzle with reduced spout for jet effect.



#### TN1025

- New design slump gun nozzle with hardened tube with 10mm reduced spout. Used by concrete trucks for adding water or wash down operations.
- 1" BSP female inlet with steel handle.



#### 227C-25

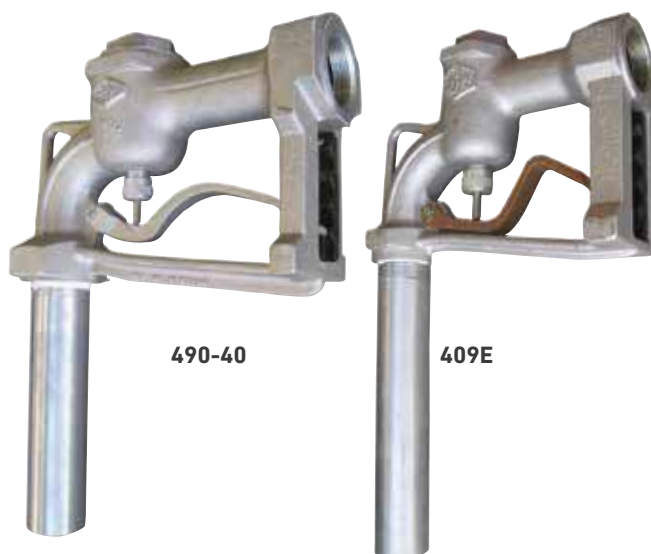
- 1" NPT brass manual nozzle
- Traditional style brass manual nozzle for under ground coal mine use.
- Pressure up to 35 PSI.
- Diesel, petrol or compliant solvents.
- Teflon seal.

Code	Description
227C-25	1" NPT brass manual nozzle.



### MANUAL BULK FUEL OIL DELIVERY NOZZLES

Fuel Equipment



490-40

409E

#### 490 SERIES

EBW dual poppet nozzle for demanding everyday use with tanker delivery trucks. These rugged nozzles feature Nylafil replaceable lever latch and pin bushing that resist wear at least five times longer than aluminium. Sturdy construction, with replacement wear parts along with service kits, gives you peace of mind with your nozzle purchase.

#### Features

- Manual shut off.
- Trim modern design, light to hold, easy to use.
- Extra heavy lugs at wear points
- Dual poppet ensures easy opening and precise "topping off"
- 1½" (32 mm) and 1½" (40 mm) Sizes
- Full service kit available
- Suitable for diesel or petrol

#### Options:

- Swivel connector, SW32CK(32mm) or SW40CK(40mm)
- Camlock Nozzle Spout Adaptor

#### CONSTRUCTION

BODY	Aluminium
STEM	Stainless steel
PACKING	Teflon impregnated
DISCS	Viton

#### 1250

1½" Heavy duty manual fuel delivery nozzle for truck, contractor pumps or gravity use. Lever latch with brass handle for heavy duty use.

- Aluminium construction
- 260 LPM flows
- Removable spout
- Diesel use only
- 1½" BSP female inlet.
- 25 PSI WP.



#### A1298

- Automatic shut off nozzle.
- Full aluminium construction
- Nozzle sensing tip
- Dash poppet operation
- 260 LPM flows
- Pump use only.
- Diesel use only.
- 1½" BSP female inlet.
- 25 PSI WP.



Oil/Lube Equipment



AdBlue Equipment

PART #	DESCRIPTION
409E	1½" (32 mm) Bulk fuel truck delivery manual nozzle.
490-40	1½" (40 mm) Bulk fuel truck delivery manual nozzle.
1250	1½" (40 mm) Fuel manual nozzle for Contractor pumps.
A1298	1½" (40 mm) Automatic shut off bulk fuel nozzle
ADS-1	1.2 Mtr x 41 mm O.D drum filling spout.
SP121A	1½" (32 mm) Spout with camlock adaptor for 409E Nozzle.
AL32B	1½" (32 mm) Camlock coupler for 409E Nozzle.
409E-A21K	Poppet service kit for 409E nozzle complete with stem packing.
490-40A31K	Poppet service kit for 490-40 nozzle complete with stem packing.



### HIGH VOLUME DIESEL - LUBE OIL SYSTEMS FOR HEAVY EQUIPMENT

#### BNM800M

- 2" New Banlaw lightweight refuelling nozzle with dust plug.
- Flow range 100-800 LPM.
- Inlet 2" NPT female.
- New carry handle design, incorporating stainless steel for added durability.
- Strengthened operating T-handle.
- Measures to further minimise contamination ingress into the rear chamber of the nozzle, particularly the piston bore.
- A new nozzle body, comprising a stainless steel section at the front for increased durability and improved latching onto the mating fuel receiver.
- Serviceable (replaceable) stainless steel bore sleeve in the rear piston chamber
- Automatic Shut off
- Dependable ball locking mechanism
- Dry break disconnection minimises leakage
- Manufactured from metal not plastic

#### BAMS5

2" Bulk transfer nozzle for diesel or oils. Dry break technology. Flow range 100-800 LPM. Fits BRM23 Receiver. Inlet 2" NPT female.



#### AUS45

- Banlaw 1.5" Underground Mining Nozzle AUS45. 90-800 LPM / 24-211GPM
- Mass (with plug): 3.4kg (7.5lbs)



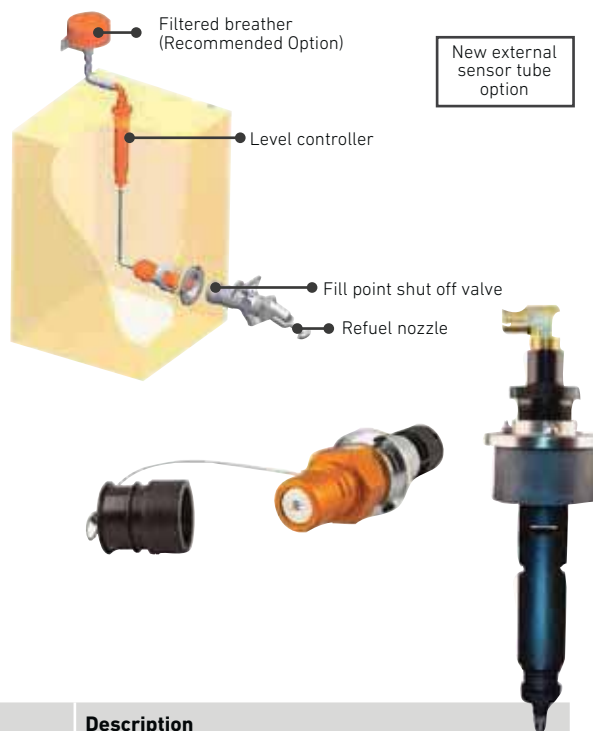
Code	Description
BNM800M	2" (50mm) New Banlaw Automatic Nozzle.
AUS45	Banlaw 1.5" Underground Mining Nozzle. 90-800 LPM
AUS46K	Banlaw receiver to suit AUS45 underground nozzle
BAMS5	2" (50mm) Bulk Manual Nozzle - non shut off.



### FAST FILL NON PRESSURISED FILLING FOR TANKS, MINING AND EARTHMOVING MACHINERY

#### SH-971

- Refuel or fill any fluid storage vessel accurately and prevent spillage or over-pressurizing the storage tank.
- Flow rates up to 220 GPM (835 LPM).
- Positive shut off prevents manual override.
- Meets directive 97/23/EC and does not pressurize tank.
- No spills or burst tanks.
- Ground level filling.
- Select and mount either style valve to the lower part of the fuel tank and mount the control vent to the upper part of the tank. Feed connection hose internally in tank.
- Adjustable vent spacers provides fine shut off tuning.
- New external sensor tube option



Code	Description
SH-971	2" NPT non pressurised Kit for fast fill system to suit 2" Banlaw or Wiggins auto shut off nozzles. Internal or external sensor tube option



### VENTS

#### AUS25A

Standard high capacity vent, 2" NPTM with splash tube, 16 PSI.

##### Options:

- Colour coded low pressure vent.
- 7 PSI.



Filtered vent for dust free venting of diesel tanks in extreme conditions.

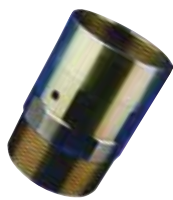


### SWIVELS

Large range of swivels for harsh operating conditions under constant load use.

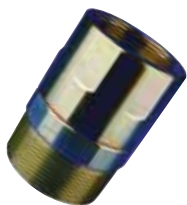
**AUS10** - 2" NPT M-F. Zinc steel construction.

**AUS8** - 1½" NPT M-F. Zinc steel construction.



**AUS9** - 2" NPT-1½" M-F. Zinc steel construction.

**AUS50** - 2" NPT M-F. Aluminium anodised construction.



### RECEIVERS

Standard Banlaw 2" Fuel receiver with cap to suit BNM800M Banlaw nozzle and other interchangeable brands. 2" NPT.

#### BRM23K



### TANK ACCESSORIES



Filling spouts



Receiver Flush Mount Shell. Weld on or boltable flush mount fitting for safe receiver access.

#### AUS25R

Low profile railway vent with flexible float case for low profile tanks. Pressure 7 PSI.

##### Options:

- Hose tail barb to connect hose for vent discharge.
- Extension splash tubes for round top tanks.
- Flange mount to suit Caterpillar or Kamatsu tanks.



### BREAKAWAY VALVES

To protect fuel station from massive damage due to accidental drive away when connected.

#### AUS4W-50

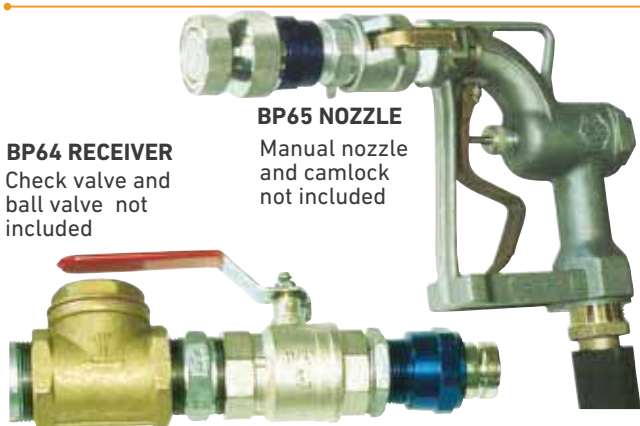


2" BSPT

Code	Description
AUS25A	2" Vent. 16 PSI setting for flat top tanks. Tube length 250mm.
AUS25A-L	2" Vent. 7 PSI setting for flat top tanks. Tube length 220mm.
AUS25A-C	Banlaw Vent Standard with ¾" hose tailed outlet 16 PSI (RED CAP)
AUS25-C	2" Vent. 16 PSI setting for round tanks. Tube length 340mm.
AUS25C-L	2" Vent. 7 PSI setting for round tanks. Tube length 340mm.
AUS25R	2" Vent. 7 PSI setting with flexible vent cage. Tube length 200mm.
AUS4W-50	2" BSPT breakaway valve.
BRM23K	2" NPT Standard Receiver includes cap
AUS8	1½" NPT M-F Zinc steel swivel
AUS9	2" NPT - 1½" NPT M-F Zinc steel swivel
AUS10	2" NPT M-F Zinc steel swivel joint.
AUS50	2" NPT M-F lightweight aluminium swivel

**BP64 RECEIVER**  
Check valve and ball valve not included

**BP65 NOZZLE**  
Manual nozzle and camlock not included



Receiver fitted to typical nozzle installation for bottom loading fuel storage tanks. Fitted with viton seals. Helps to comply with Current Site Practices with refuelling in marine applications to protect our waterways.

Part #	Description	Max. Flow	Size
BP64	Fuel Receiver.	300 LPM.	1¼" NPT.
BP65	Fuel Nozzle.	300 LPM.	1¼" NPT.



### SWIVEL JOINTS

Equipco stock and distribute an extensive range of swivel joints for use with fuel nozzles. Varying sizes and configurations allow for most applications required. Certain large swivel sizes have inbuilt check valves to satisfy NMI/NSC resale approvals.



**20255W**



**2515W**



**20S**



**25S**



**BBHS25**



**HMP20**



**3DC-20/25**



**SW40CK**  
1 1/2" Swivel with check valve for bulk fuel nozzle use.



**SW32CK**  
1 1/4" Swivel with check valve for bulk fuel nozzle use.



**40BSW**  
**50BSW**



**DN6125**



**DN6150**

#### Features:

- Compact size
- Male-Female connections
- Reduced thread options
- Aluminium and brass construction
- Low pressure use 25 PSI max.

#### Options:

- Twin Plane Swivel joint to give freedom of movement and extra flexibility of use.

Code	Description
20255W	3/4" BSP Male - 1" Female BSP Straight plane swivel. All brass.
2515W	1" BSP Male - 1" Female BSP Straight plane swivel. All brass.
2025S	3/4" BSP Male - 1" Female BSP Straight plane swivel.
20S	3/4" BSP Male - 3/4" Female BSP swivel.
25S	1" BSP Male - 1" Female BSP swivel.
HMP20	3/4" Husky multi-plane swivel. 3/4" BSP Inlet/outlet. UL listed. Viton seal.
HMP25	1" Husky multi-plane swivel. 1" BSP inlet/outlet. UL listed. Viton seal.
BBHS25	1" Husky Multi-Plane Ball Bearing Swivel. Viton seal.
3DC-20	3/4" Male-Female twin plane swivel BSP thread. Viton seal.
3DC-25	1" Male-Female twin plane swivel BSP thread. Viton seal.
SW32CK	1 1/4" (32mm) BSP swivel with check valve. Viton seal.
SW40CK	1 1/2" (40mm) BSP swivel with check valve. Viton seal.
DN6125	32mm BSP swivel with internal check valve.
DN6150	40mm BSP swivel with internal check valve.
40BSW	1 1/2" BSP M - F Brass swivel with viton seal. Viton seal. 110 PSI W.P. max.
50BSW	2" BSP M - F Brass swivel with viton seal. Viton seal. 110 PSI W.P. max.

### BREAKAWAY COUPLINGS

Equipco provide a range of breakaway couplings to help protect bowers and nozzle installations from damage due to accidental drive away incidents while nozzle is still connected to vehicle fill point.



**E20TB**



**MB20H**



**ZV25TB**

Code	Description
E20TB	3/4" BSP Multiplane swivel with reusable breakaway
E25TB	1" BSP Multiplane swivel with reusable breakaway
ZV20TB	25mm 1" Multiplane swivel with reusable breakaway to suit ZVA slimline nozzles.
ZV25TB	1" Multiplane swivel with reusable breakaway to suit ZVA25-5
MB20H	3/4" Husky Reconnect-Able Breakaway
MB25H	1" Husky Reconnect-Able Breakaway

